

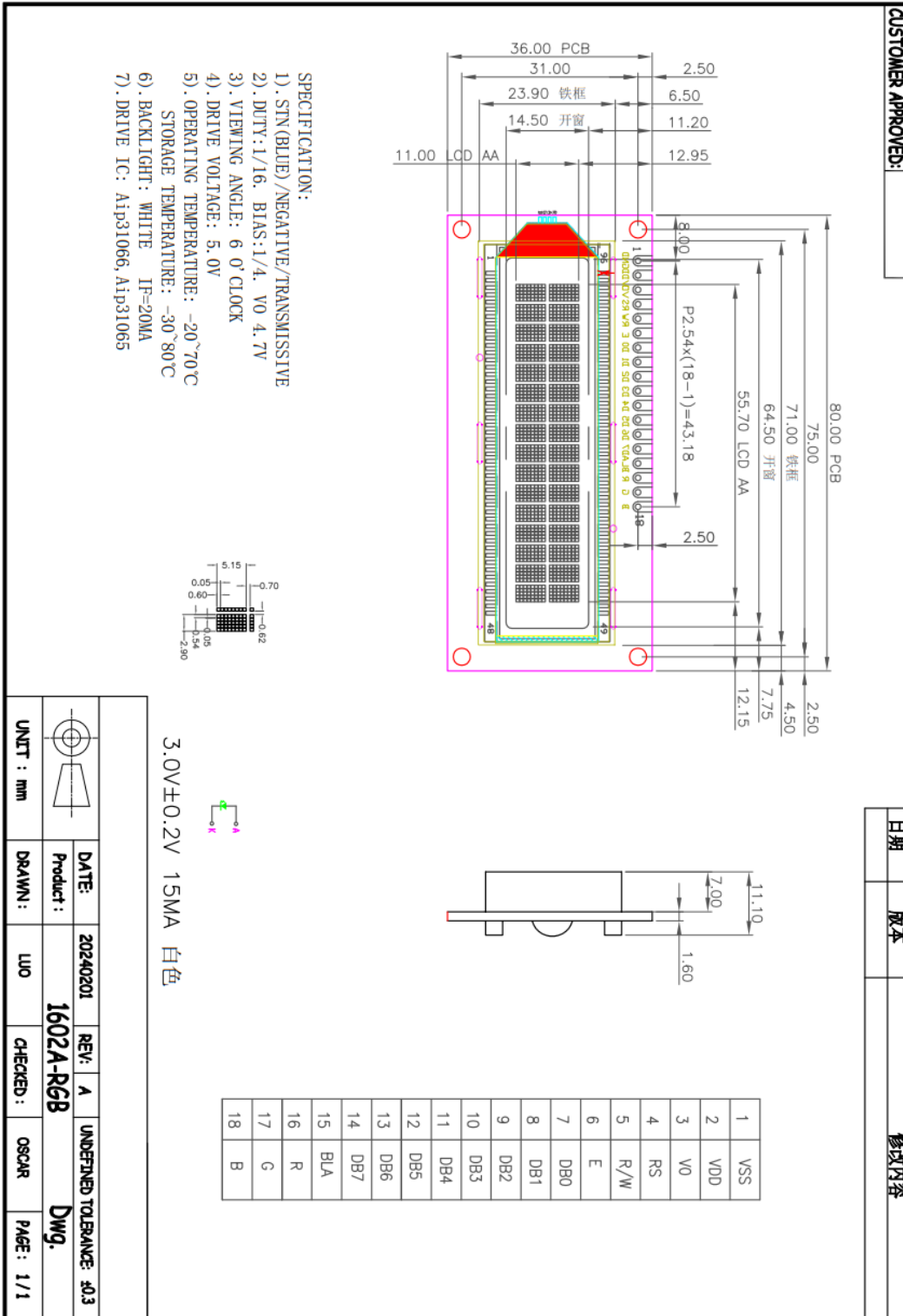


1. Features:

The features of LCD are as follows:

- **Colour:** Display dot: BLACK
Background: RGB
- **Display Format:** 16 (characters) ×2 (line)
- **IC:** Aip31068 Aip31065
- **Interface Input Data:** 8 Bits
- **Driving Method:** 1/16 Duty, 1/5 Bias
- **Viewing Direction** : 6 O'clock

11. Outline Dimensions:



SPECIFICATION:

- 1). STN(BLUE)/NEGATIVE/TRANSMISSIVE
- 2). DUTY:1/16, BIAS:1/4, V0 4.7V
- 3). VIEWING ANGLE: 6 0' CLOCK
- 4). DRIVE VOLTAGE: 5.0V
- 5). OPERATING TEMPERATURE: -20~70°C
- 6). BACKLIGHT: WHITE IF=20MA
- 7). DRIVE IC: Aip31066, Aip31065

UNIT : mm	DATE: 20240201	REV: A	UNDEFINED TOLERANCE: ±0.3
DRAWN: LUO	Product: 1602A-RGB	CHECKED: OSCAR	Dwg.
			PAGE: 1/1