



# Product Selection Guide

- 📶 Communication Wifi Module
- Ⓜ AC DC/DC DC Power Module
- Ⓢ Sensor Module

# About Us

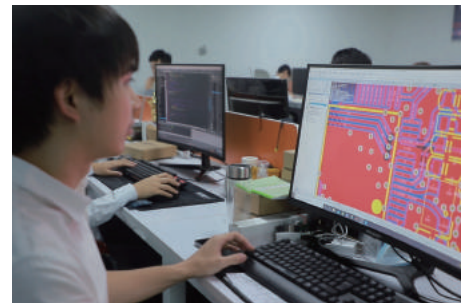


SHENZHEN HI-LINK ELECTRONIC CO., LTD.

- ◆ Dedicated to the Internet of Things industry for Over 14 years, with more than 38 software registration rights and 20 different patents.
- ◆ In 2016, listed by Shenzhen Qianhai Equity Center (stock code: 668537) and won the title of National High-tech Enterprise.
- ◆ Build an IoT smart home industry application platform, and reach strategic partnership with more than 10,000+ industry companies.



Hi-Link Electronics has strong research and development strength, more than 14 years of industry technology precipitation, to provide customers with professional and reliable products, strong technical support and intimate after-sales service guarantee. We always adhere to the product policy of 'creating value, customer first, taking advantage of the trend, keeping improving', insisting on independent innovation, growing together with customers, and striving to provide customers with better products and services.



## HLK-7628N Router Module

Dual Antenna/High Performance/  
OpenWrt Secondary Development

### ■ Product Features

- MediaTek MT7628NN high performance chipset solution
- Integrated 580 MHz MIPS® 24KEc™ CPU
- Compliant with 802.11 b/g/n wireless standard
- 2T2R 2.4 GHz, wireless rate up to 300Mbps
- Support Router/AP/STA/AP Client/Bridge functions
- LAN port \*4/WAN port \*1/UART\*3
- Built in 128MB RAM/32MB FLASH, RAM and Flash can be customised
- Provide hardware and software technology after-sales service and support customized development

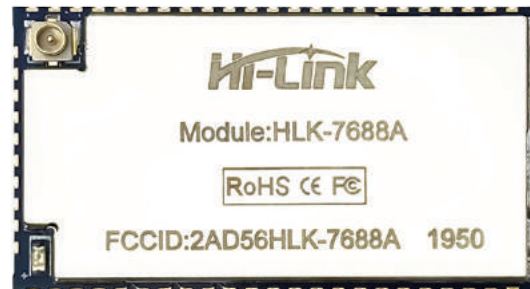


## HLK-7688A Router Module

Small size/ High Performance/OpenWrt  
Secondary Development

### ■ Product Features

- MediaTek MT7688A high performance chipset solution
- Integrated 580 MHz MIPS® 24KEc™ CPU
- Compliant with 802.11 b/g/n wireless standard
- 1T1R 2.4 GHz, wireless rate up to 150Mbps
- Support Router/AP/STA/AP Client/Bridge functions
- Rich interface, - UART/GPIO/PWM/SPI, etc
- Built-in 128MB RAM/32MB FLASH, RAM and Flash can be customised
- Provide hardware and software technology after-sales service and support customized development

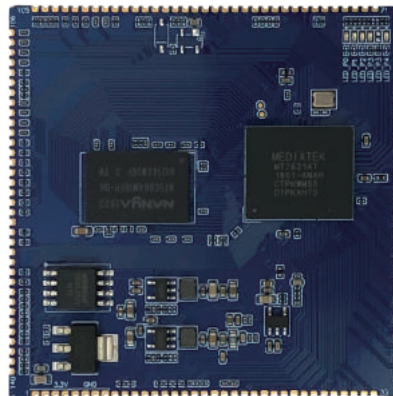


## HLK-7621 Gigabit Router Module

High performance and high integration  
Support Openwrt development

### Product Features

- MediaTek MT7621A chipset solution
- Integrated 880MHz MIPS®1004KEc™ dual core CPU
- 32 KB I-Cache and 32 KB D-Flash per kernel
- Integrated 5-port 10/100/1000 Mbps Ethernet switch
- Support RGMII, USB3.0/2.0, PCIe, SD-XC and other interfaces
- 2Gbps IPv4/6 NAT, QoS, SAMBA and VPN hardware accelerator
- Support Gbps LAN bandwidth, suitable for big data download and backup
- Support OpenWrt secondary development and provide SDK development package

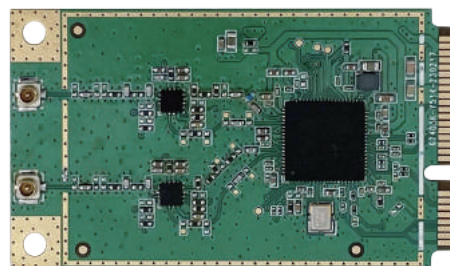


## HLK-7612E 5.8G mini PCIE Network card

miniPCIE port 5.8G wifi

### Product Features

- High-performance 2T2R dual-band 802.11ac standard, supporting 5.8Ghz, 867Mbps
- Support 802.11i security standard and hardware accelerator TKIP, CCMP, GCMP, WAP
- External PA and LAN design, supporting wide coverage and indoor and outdoor applications
- Video, voice and multimedia applications supporting 802.11e QoS
- Provides feature-rich wireless connectivity and reliable throughput over long distances
- The size is 50.95 \* 30 \* 1mm

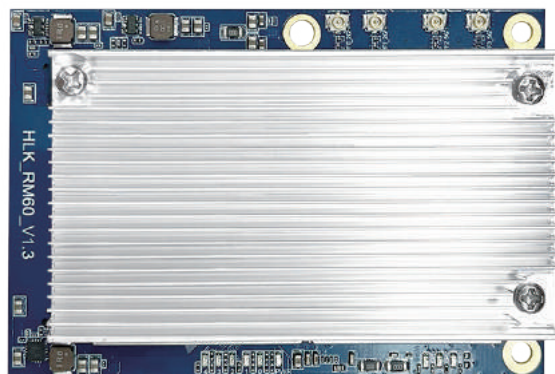


## HLK-RM60 WiFi Router Module

High performance, wide coverage, fast transmission  
Support Openwrt development

### Product Features

- Compatible with IEEE 802.11 a/b/g/n/ac/ax
- Dedicated high performance 32-bit RISC CPU
- Supports 20 / 40MHz bandwidth in the 2.4 GHz band and 20 / 40 / 80MHz bandwidth in the 5GHz band
- It supports 2.4g/5.8GHz frequency band, and the data rate is up to 573+120Mbps
- Two working modes of STA/AP are supported
- Built in TCP/IP protocol stack
- Support wireless upgrade (OTA)
- 3.3V single power supply



## HLK-RM28K Router Module

Low cost , Dual serial ports and 5 network ports

### Product Features

- MediaTek MT7628K chipset solution
- The baud rate of serial port can reach 2Mbps
- Support 802.11 b/g/n network standard
- Support WiFi encryption method WEP/WPA-PSK/WPA2-PSK, etc.
- 5 Ethernet ports, 1 WAN port and 4 LAN ports
- 2.4G WiFi, wireless standard supports IEEE 802.11 B/g/N, STA, AP and AP client
- Built in TCP / IP protocol stack, supporting rich functions such as DHCP and DNS
- Both AT command and WEB page can configure parameters



# Hlk-RM56 Dual-band WIFI Module

High performance/ high integration/  
support Harmony OS

## Product Features

- Integrated quad-core ARM processor (up to 1GHz)
- Support 2.4G+5G dual-band WiFi, 1T1R
- Support standard 802.11 a/b/g/n protocol
- Bluetooth BT/BLE5.2 dual-mode and LE audio support
- High Fidelity Stereo Audio DAC and ADC
- Applicable to various AIoT multi-modal VUI+GUI interactive hardware scenarios
- Supports up to 42MB RAM and 32MB NOR Flash

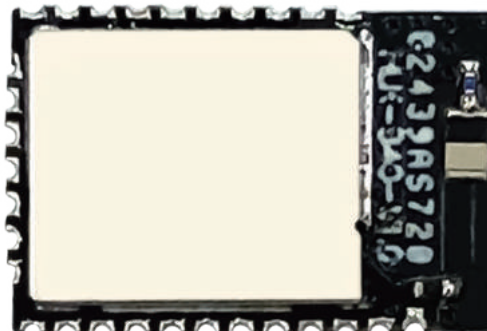


# Hlk-B40 BLE Bluetooth Module

Low power consumption/ master-slave  
integration, BLE5.1

## Product Features

- Comply with BLE 5.1 standard
- Embedded 32-bit processor with main frequency supporting 48MHz
- Support low power consumption mode, sleep mode power consumption is as low as 6uA
- 2 x UART, serial baud rate up to 921600bps
- Master-slave Bluetooth, supporting binding encryption and customized broadcast data
- Support on-board PCB antenna or external antenna
- Wide working voltage: support 2.0 V-3.6 V (typical 3.3 V)
- Rich peripheral interfaces GPIO, SPI, IIC, UART, ADC, PWM, etc
- Based on BLE5.1, the speed is faster, the transmission distance is longer, and the open environment can reach 40-100m



## HLK-LD101V/LD101L Radar sensor Module

10.525G X-band radar low-power moving sensing

### Product Features

- Operating frequency 10.525GHz
- Wide voltage operation: +3.3V~15V
- Modular package: 20mm \* 25mm \* 4mm
- Sensing distance is about 7m (linear distance)
- Detection angle 100°
- Maximum transmission power: 2dBm
- Maximum receiving sensitivity: -95dBm

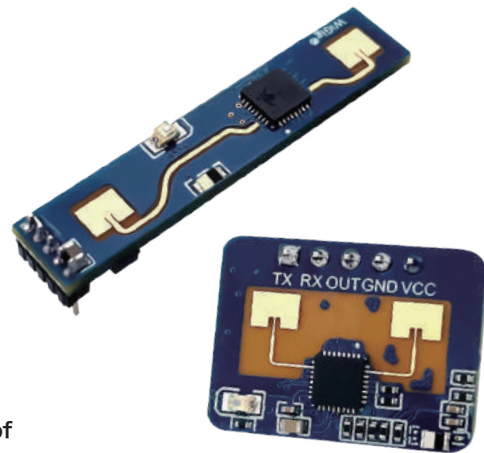


## HLK-LD2410B/LD2410C-24G Human Presence Radar Module

24G human presence sensing, movement sensing, multi-level intelligent parameter adjustment

### Product Features

- The maximum sensing distance is up to 6 meters
- Large detection angle, coverage up to  $\pm 60^\circ$
- Compact and simple, the minimum size is only 7mm \* 35mm/16mm \* 22mm
- Accurate identification within the section, support the division of sensing range, and shield the interference outside the section
- Supports multiple installation methods such as hanging top and wall mounting
- Plug and play, simple assembly method
- Multi-level intelligent parameter adjustment to meet the needs of scene changes

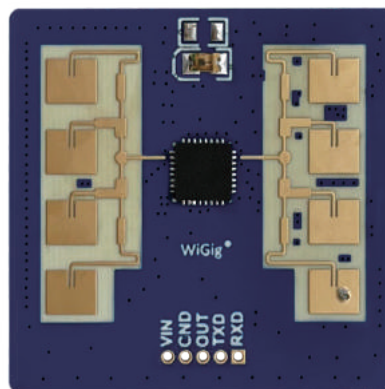


## HLK-LD2411-24G Human Presence Radar Module

24G human presence sensing Intelligent toilet & ranging scheme

### Product Features

- With the gesture control function, according to the gesture output specific data, suitable for the smart toilet
- Large detection angle, coverage up to  $\pm 30^\circ$
- Accurate identification within the interval, support the induction range division, shielding interference outside the interval
- Small and simplified, size 27.5\*27.5mm, support hanging top, wall and other installation methods
- Plug and play, simple assembly method
- Multi-level intelligent parameter adjustment to meet the needs of scene changes



## AC/DC HLK-PM01 Power Module

Small package, low ripple noise  
Output short-circuit and over-current protection

### Product Features

- Wide range input: 85-265VAC/120-350VDC
- Working temperature:  $-25^\circ\text{C}$ ~ $+60^\circ\text{C}$
- Input and output isolation, isolation voltage 3000VAC
- No load power consumption  $\leq 0.1\text{W}$
- Excellent output short circuit and over-current protection, self recovery
- High reliability and long service life design, continuous working time  $> 100000$  hours
- Fully enclosed plastic shell, meets the requirements of UL94-V0
- Passed CE certification and RoHS certification, and meets the requirements of UL/EMC safety test





## AC/DC HLK-5M05 Power Module

Ultra small volume, high efficiency, high reliability,  
Output short-circuit over-current protection

### Product Features

- Wide range input: 85-265VAC/120-350VDC
- Working temperature: -25°C~+60°C
- Input and output isolation, isolation voltage 3000VAC
- No load power consumption  $\leq 0.1W$
- Excellent output short circuit and over-current protection, self recovery
- High reliability and long service life design, continuous working time >100000 hours
- Fully enclosed plastic shell, meets the requirements of UL94-V0
- Passed CE certification and RoHS certification, and meets the requirements of UL/EMC safety test



## AC/DC HLK-10M12 Power Module

Small size, high efficiency, high reliability, safe isolation  
Output short circuit and over-current protection

### Product Features

- Wide range input: 85-265VAC/120-350VDC
- Working temperature: -25°C~+60°C
- Input and output isolation, isolation voltage 3000VAC
- No load power consumption  $\leq 0.1W$
- Excellent output short circuit and over-current protection, self recovery
- High reliability and long service life design, continuous working time >100000 hours
- Fully enclosed plastic shell, meets the requirements of UL94-V0
- Passed CE certification and RoHS certification, and meets the requirements of UL/EMC safety test



## AC/DC HLK-20M12 Power Module

Small size, high efficiency, high reliability, safe isolation  
Output short circuit and over-current protection

### Product Features

- Wide range input: 85-265VAC/120-350VDC
- Working temperature: -25°C~+60°C
- Input and output isolation, isolation voltage 3000VAC
- No load power consumption  $\leq 0.1W$
- Excellent output short circuit and over-current protection, self recovery
- High reliability and long service life design, continuous working time  $> 100000$  hours
- Fully enclosed plastic shell, meets the requirements of UL94-V0
- Passed CE certification and RoHS certification, and meets the requirements of UL/EMC safety test



## AC/DC HLK-30M12 Power Module

Small size, high efficiency, high reliability, safe isolation,  
output short circuit and over-current protection

### Product Features

- Wide range input: 85-265VAC/120-350VDC
- Working temperature: -25°C~+60°C
- Input and output isolation, isolation voltage 3000VAC
- No load power consumption  $\leq 0.1W$
- Excellent output short circuit and over-current protection, self recovery
- High reliability and long service life design, continuous working time  $> 100000$  hours
- Fully enclosed plastic shell, meets the requirements of UL94-V0
- Passed CE certification and RoHS certification, and meets the requirements of UL/EMC safety test

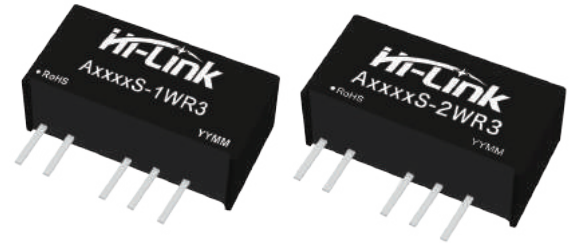


## DC/DC Power Module A\_S 1/2W Series

Constant voltage input isolation, non stabilized voltage output, high efficiency, low ripple noise

### Product Features

- Constant voltage input, isolated non regulated output
- Working ambient temperature: - 40 °C -+85 °C
- Input undervoltage, output short circuit, over-current, over- voltage protection
- Input and output safety isolation, isolation voltage 1500VDC
- The input voltage is stable, with a voltage variation range of  $\pm 10\% V_{in}$
- High reliability, long life design, continuous working time > 3.5 million hours
- International standard pin mode, PCB board in-line installation
- Meet CE/UL/EMC safety testing and RoHS certification requirements

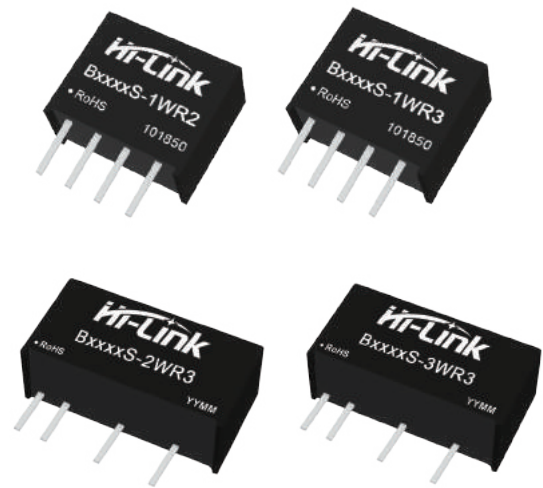


## DC/DC Power Module B\_S 1/2/3W Series

Constant voltage input isolation, non stabilized voltage output, high efficiency, low ripple noise

### Product Features

- Constant voltage input, isolated non regulated output
- Working ambient temperature: - 40 °C -+85 °C
- Input undervoltage, output short circuit, over-current, over- voltage protection
- Input and output safety isolation, isolation voltage 1500VDC
- The input voltage is stable, with a voltage variation range of  $\pm 10\% V_{in}$
- High reliability, long life design, continuous working time > 3.5 million hours
- International standard pin mode, PCB board in-line installation
- Meet CE/UL/EMC safety testing and RoHS certification requirements



## DC/DC Power Module VR&UR 5W Series

Ultra Wide Range Input, Isolation Stabilized Output, High Efficiency, Low Ripple Noise

### Product Features

- Wide voltage input, isolated stabilized output
- Working ambient temperature: - 40 °C --+85 °C
- Input and output safety isolation, isolation voltage 1500VDC
- The input voltage is stable, with a voltage variation range of  $\pm 10\%$   $V_{in}$
- High reliability, long life design, continuous working time > 3.5 million hours
- Input undervoltage, output short circuit, over-current, over-voltage protection
- International standard pin mode, PCB board in-line installation
- Meet CE/UL/EMC safety testing and RoHS certification requirements



## DC/DC Power Module VR&UR 6W Series

Ultra Wide Range Input, Isolation Stabilized Output, High Efficiency, Low Ripple Noise

### Product Features

- Wide voltage input, isolated stabilized output
- Working ambient temperature: - 40 °C --+85 °C
- Input and output safety isolation, isolation voltage 1500VDC
- The input voltage is stable, with a voltage variation range of  $\pm 10\%$   $V_{in}$
- High reliability, long life design, continuous working time > 3.5 million hours
- Input undervoltage, output short circuit, over-current, over-voltage protection
- International standard pin mode, PCB board in-line installation
- Meet CE/UL/EMC safety testing and RoHS certification requirements



## DC/DC Power Module VR&UR 10W Series

Ultra Wide Range Input, Isolation Stabilized Output, High Efficiency, Low Ripple Noise

### Product Features

- Wide voltage input, isolated stabilized output
- Working ambient temperature: - 40 °C ~+85 °C
- Input and output safety isolation, isolation voltage 1500VDC
- The input voltage is stable, with a voltage variation range of  $\pm 10\%$  Vin
- High reliability, long life design, continuous working time > 3.5 million hours
- Input undervoltage, output short circuit, over-current, over- voltage protection
- International standard pin mode, PCB board in-line installation
- Meet CE/UL/EMC safety testing and RoHS certification requirements



## DC/DC Power Module UR 20W Series

Ultra Wide Range Input, Isolation Stabilized Output, High Efficiency, Low Ripple Noise

### Product Features

- Wide voltage input, isolated stabilized output
- Working ambient temperature: - 40 °C ~+85 °C
- Input and output safety isolation, isolation voltage 1500VDC
- The input voltage is stable, with a voltage variation range of  $\pm 10\%$  Vin
- High reliability, long life design, continuous working time > 3.5 million hours
- Input undervoltage, output short circuit, over-current, over- voltage protection
- International standard pin mode, PCB board in-line installation
- Meet CE/UL/EMC safety testing and RoHS certification requirements



## DC/DC Power Module UR 30W Series

Ultra Wide Range Input, Isolation Stabilized Output, High Efficiency, Low Ripple Noise

### Product Features

- Wide voltage input, isolated stabilized single output
- Working ambient temperature: - 40 °C --+85 °C
- Input and output safety isolation, isolation voltage 1500VDC
- The input voltage is stable, with a voltage variation range of  $\pm 10\%$   $V_{in}$
- High reliability, long life design, continuous working time > 3.5 million hours
- Input undervoltage, output short circuit, over-current, over-voltage protection
- International standard pin mode, PCB board in-line installation
- Meet CE/UL/EMC safety testing and RoHS certification requirements



## DC/DC Power Module UR 40/50W Series

Ultra Wide Range Input, Isolation Stabilized Output, High Efficiency, Low Ripple Noise

### Product Features

- Wide voltage input, isolated stabilized output
- Working ambient temperature: - 40 °C --+85 °C
- Input and output safety isolation, isolation voltage 1500VDC
- The input voltage is stable, with a voltage variation range of  $\pm 10\%$   $V_{in}$
- High reliability, long life design, continuous working time > 3.5 million hours
- Input undervoltage, output short circuit, over-current, over-voltage protection
- International standard pin mode, PCB board in-line installation
- Meet CE/UL/EMC safety testing and RoHS certification requirements



# Products List

Router WIFI Module							
Model No.	Size(mm)	Chip	RAM (MB)	FLASH (MB)	Function	Working Mode	Connector
HLK-7688A	33.2*18.7*2.2	MT7688AN	128	32	OPENWRT	Router/AP/STA/AP Client/Bridge	UART/GPIO/PWM/SPI etc
HLK-7688AL			256	64			
HLK-7688AF			256	32			
HLK-7688AC			64	32			
HLK-7688AS			64	16			
HLK-7628N	35.5*18.7*2.2	MT7628N	128	32	OPENWRT	Router/AP/STA/AP Client/Bridge	UART/GPIO/PWM/SPI etc
HLK-7628NL			256	64			
HLK-7628NF			256	32			
HLK-7628NC			64	32			
HLK-7628NS			64	16			
HLK-7621	50*50*3	MT7621A	256	32	OPENWRT	Integrated dual-core CPU	RGMII/USB3.0(2.0)/PCIe/SD-XC etc
HLK-GD01	50*50*10.2	MT7688A/MT7628N+EC20(EC25)	128	32	3G/4G dial-up Internet	Router/AP/STA/AP Client/Bridge	LAN*4/WAN*1/UART*2 etc
HLK-RM60 WIFI6	90*60	MT7621AN+MT7905	128	16	2.4G/ 5.8 GHz WIFI6 module	STA/AP Client	UART/IIC/GPIO/PWM/SPI etc
HLK-RM28K	40*29	MT7628K	8	4	2.4G Dual Serial Port Transmission module	Router/AP/STA/AP Client	LAN*4/WAN*1

IOT WIFI Module							
Model No.	Size(mm)	Chip	RAM(MB)	FLASH(MB)	Function	Working Mode	Connector
HLK-RM58S	30*22*3.2	MT7697D	352K	4	2.4G/5.8G Dual WIFI+BLE 4.2	AP,STA and BLE	UART/IIC/GPIO/PWM/SPI etc
HLK-RM56	30*19.8*3.3	Harmony OS	42	32	2.4+5.8G dual-band BT/BLE5.2	STA/AP	USB2.0,UART,12C,12S,PWM,GPIO
HLK-B35	24*16.2*1.6	BL602	276KBytes	16Mbit	WIFI+BLE5.0	AP, STA and BLE coexistence mode	UART, GPIO, I <sup>2</sup> C, PWM, SPI

BLE Module							
Model No.	Size(mm)	Chip	Working Frequency	Protocol Standard	Transmit Power	Working Mode	Reference Distance
HLK-B40	14*9.5*2	FR8XX	2.402-2.480GHz	BLE5.1	10dBm (Adjustable)	Master and slave in one	50-100M

Voice Module							
Model No.	Size(mm)	Chip	Language Version	Working Mode	Mic	Working Voltage	Recognition rate
HLK-V20	16*18*2.6	Domestic chip	Chinese/English version	150 lines command	1	3.6-5V	≥ 95%(in Quiet environment)
HLK-V21	31.5*28	Domestic chip	Chinese/English version	150 lines command	2	3.6-5V	≥ 95%(in Quiet environment)

## Radar Module

Model No.	Frequency	Size(mm)	Working Frequency	Voltage range	Detect distance	Detection angle	Working mode
HLK-LD101V	57600	10*25*4	10.525GHz	3.3V-15V	around 7m	100°	inching, motion
HLK-LD101L	57600	18*20	10.525GHz	3.3V-15V	around 7m	100°	inching, motion
HLK-LD2410	256000	7*35	24GHz~24.25GHz	5V	0.75m-6m, adjustable	±60°	Static, inching, motion
HLK-LD2410B (BLE)	256000	18*20	24GHz~24.25GHz	5V	0.75m-6m, adjustable	±60°	Static, inching, motion
HLK-LD2410C	256000	16*22	24GHz~24.25GHz	5V	0.75m-6m, adjustable	±60°	Static, inching, motion
HLK-LD2411	256000	27.5*27.5	24GHz~24.25GHz	5V	0.75m-6m, adjustable	±30°	Static, inching, motion
HLK-LD1115H	115200	25*25*11	24.GHz-24.25GHz	3.6-5V	Static > 4m Moving > 16m	Horizontal ± 57° vertical ± 24°	Static, inching, motion
HLK-LD1125H	115200	31*16*9	24GHz~24.25GHz	3.3-5V	Static > 4m Moving > 16m	Horizontal / vertical:± 22°	Static, inching, motion

## AC DC Power Module

Model No.	Size(mm)	Weight (g)	Output Watt (w)	Output Voltage (v)	Output Current (mA)	Efficiency %(Typ)
HLK-2M03	30*16*19	18g	2W	3.3	600	69
HLK-2M05				5	400	
HLK-2M09				9	230	
HLK-2M12				12	170	
HLK-2M24				24	84	
HLK-PM01	34*20*15	20g	3W	5	600	72
HLK-PM03				3.3	1000	
HLK-PM09				9	330	
HLK-PM12				12	250	
HLK-PM24				24	125	
HLK-PM01L	32*18*12	10g	3W	5	600	72
HLK-PM03L				3.3	1000	
HLK-PM09L				9	330	
HLK-PM12L				12	250	
HLK-PM24L				24	125	
HLK-5M03	38*23*18	32g	5W	3.3	1500	72
HLK-5M05				5	1000	
HLK-5M09				9	560	
HLK-5M12				12	450	
HLK-5M24				24	208	



## AC DC Power Module

Model No.	Size(mm)	Weight (g)	Output Watt (w)	Output Voltage (v)	Output Current (mA)	Efficiency %(Typ)
HLK-10M03	47*28*22	40g	10W	3.3	3000	72
HLK-10M05				5	2000	
HLK-10M09				9	1100	78
HLK-10M12				12	830	
HLK-10M24				24	416	
HLK-10M03L	44.5*25*19	23g	10W	3.3	3000	72
HLK-10M05L				5	2000	
HLK-10M09L				9	1100	78
HLK-10M12L				12	830	
HLK-10M24L				24	416	
HLK-12M12	50.8*25.4*15	50g	12W	12	1000	86
HLK-15M05C	46.9*27.8*21.8	40g	15W	5	3000	83
HLK-15M09C				9	1660	
HLK-15M12C				12	1250	
HLK-15M15C				15	1000	
HLK-15M24C				24	625	
HLK-20M05	57*33*22.5	80g	20W	5	4000	80
HLK-20M09				9	2200	
HLK-20M12				12	1666	
HLK-20M15				15	1300	84
HLK-20M24				24	833	
HLK-20M05L	54.5*31*20.5	65g	20W	5	4000	80
HLK-20M09L				9	2200	
HLK-20M12L				12	1666	
HLK-20M15L				15	1300	84
HLK-20M24L				24	833	
HLK-30M09	57.5*33.6*22.5	80g	30W	9	3300	90
HLK-30M12				12	2500	
HLK-30M15				15	2000	
HLK-30M24				24	1250	
HLK-30M09C	57.5*33.6*22.5	80g	30W	9	3300	86
HLK-30M12C				12	2500	
HLK-30M15C				15	2000	
HLK-30M24C				24	1250	
HLK-40M09	57.5*33.6*22.5	80g	40W	9	4400	90
HLK-40M12				12	3300	
HLK-40M15				15	2600	
HLK-40M24				24	1600	

# DC DC 1W Special Input Power Isolation Series

## B\_S-1WR2 PRODUCT SELECTION

Model	Power	Input voltage (Vo/Io)	Output voltage / current	Efficiency % (Typ)	Isolation voltage
B0303S-1WR2	1W	3.3V (2.97V-3.63V)	3.3V/303mA	68	1500VDC (SIP)
B0305S-1WR2			5V/200mA	72	
B0312S-1WR2			12V/84mA	76	
B0503S-1WR2	1W	5V (4.5V-5.5V)	3.3V/303mA	68	1500VDC (SIP)
B0505S-1WR2			5V/200mA		
B0509S-1WR2			9V/111mA	76	
B0512S-1WR2			12V/84mA		
B0515S-1WR2			15V/67mA		
B0524S-1WR2		24V/42mA			
B1203S-1WR2	1W	12V (10.8V-13.2V)	3.3V/303mA	68	1500VDC (SIP)
B1205S-1WR2			5V/200mA		
B1209S-1WR2			9V/111mA	76	
B1212S-1WR2			12V/84mA		
B1215S-1WR2			15V/67mA		
B1224S-1WR2		24V/42mA			
B1503S-1WR2	1W	15V (13.5V-16.5V)	3.3V/303mA	68	1500VDC (SIP)
B1505S-1WR2			5V/200mA		
B1509S-1WR2			9V/111mA	76	
B1512S-1WR2			12V/84mA		
B1515S-1WR2			15V/67mA		
B1524S-1WR2		24V/42mA			
B2403S-1WR2	1W	24V (21.6V-26.4V)	3.3V/303mA	68	1500VDC (SIP)
B2405S-1WR2			5V/200mA		
B2409S-1WR2			9V/111mA	76	
B2412S-1WR2			12V/84mA		
B2415S-1WR2			15V/67mA		
B2424S-1WR2		24V/42mA			

## B\_S-1WR3 PRODUCT SELECTION

Model	Power	Input voltage (Vo/Io)	Output voltage / current	Efficiency % (Typ)	Isolation voltage
B0303S-1WR3	1W	3.3V (2.97V-3.63V)	3.3V/303mA	78	1500VDC (SIP)
B0305S-1WR3			5V/200mA	79	
B0309S-1WR3			9V/111mA	80	
B0312S-1WR3			12V/84mA		
B0315S-1WR3			15V/67mA		
B0324S-1WR3		24V/42mA	81		
B0503S-1WR3	1W	5V (4.5V-5.5V)	3.3V/303mA	80	1500VDC (SIP)
B0505S-1WR3			5V/200mA	85	
B0509S-1WR3			9V/111mA	80	
B0512S-1WR3			12V/84mA		
B0515S-1WR3			15V/67mA		
B0524S-1WR3		24V/42mA	81		
B1203S-1WR3	1W	12V (10.8V-13.2V)	3.3V/303mA	81	1500VDC (SIP)
B1205S-1WR3			5V/200mA	86	
B1209S-1WR3			9V/111mA	87	
B1212S-1WR3			12V/84mA		
B1215S-1WR3			15V/67mA	88	
B1224S-1WR3		24V/42mA			
B1503S-1WR3	1W	15V (13.5V-16.5V)	3.3V/303mA	81	1500VDC (SIP)
B1505S-1WR3			5V/200mA	86	
B1509S-1WR3			9V/111mA	87	
B1512S-1WR3			12V/84mA		
B1515S-1WR3			15V/67mA	88	
B1524S-1WR3		24V/42mA			
B2403S-1WR3	1W	24V (21.6V-26.4V)	3.3V/303mA	81	1500VDC (SIP)
B2405S-1WR3			5V/200mA	86	
B2409S-1WR3			9V/111mA	87	
B2412S-1WR3			12V/84mA		
B2415S-1WR3			15V/67mA	88	
B2424S-1WR3		24V/42mA			

## B\_LS-1WR3 PRODUCT SELECTION

Model	Power	Input voltage (Vo/Io)	Output voltage / current	Efficiency % (Typ)	Isolation voltage
B0303LS-1WR3	1W	3.3V (2.97V-3.63V)	3.3V/303mA	76	1500VDC (SIP)
B0305LS-1WR3			5V/200mA	80	
B0312LS-1WR3			12V/84mA	84	
B0503LS-1WR3	1W	5V (4.5V-5.5V)	3.3V/303mA	76	1500VDC (SIP)
B0505LS-1WR3			5V/200mA	86	
B0509LS-1WR3			9V/111mA		
B0512LS-1WR3			12V/84mA	87	
B0515LS-1WR3			15V/67mA		
B0524LS-1WR3		24V/42mA			
B1203LS-1WR3	1W	12V (10.8V-13.2V)	3.3V/303mA	76	1500VDC (SIP)
B1205LS-1WR3			5V/200mA	86	
B1209LS-1WR3			9V/111mA		
B1212LS-1WR3			12V/84mA	87	
B1215LS-1WR3			15V/67mA		
B1224LS-1WR3		24V/42mA			
B1503LS-1WR3	1W	15V (13.5V-16.5V)	3.3V/303mA	76	1500VDC (SIP)
B1505LS-1WR3			5V/200mA	86	
B1509LS-1WR3			9V/111mA		
B1512LS-1WR3			12V/84mA	87	
B1515LS-1WR3			15V/67mA		
B1524LS-1WR3		24V/42mA			
B2403LS-1WR3	1W	24V (21.6V-26.4V)	3.3V/303mA	76	1500VDC (SIP)
B2405LS-1WR3			5V/200mA	86	
B2409LS-1WR3			9V/111mA		
B2412LS-1WR3			12V/84mA	87	
B2415LS-1WR3			15V/67mA		
B2424LS-1WR3		24V/42mA			

## A\_S-1WR3 PRODUCT SELECTION

Model	Power	Input voltage (Vo/Io)	Output voltage / current	Efficiency % (Typ)	Isolation voltage
A0303S-1WR3	1W	3.3V (2.97V-3.63V)	±3.3V/±152mA	76	1500VDC (SIP)
A0305S-1WR3			±5V/±100mA	86	
A0309S-1WR3			±9V/±56mA	87	
A0312S-1WR3			±12V/±42mA		
A0315S-1WR3			±15V/±34mA		
A0324S-1WR3		±24V/±21mA			
A0503S-1WR3	1W	5V (4.5V-5.5V)	±3.3V/±152mA	76	1500VDC (SIP)
A0505S-1WR3			±5V/±100mA	86	
A0509S-1WR3			±9V/±56mA	87	
A0512S-1WR3			±12V/±42mA		
A0515S-1WR3			±15V/±34mA		
A0524S-1WR3		±24V/±21mA			
A1203S-1WR3	1W	12V (10.8V-13.2V)	±3.3V/±152mA	76	1500VDC (SIP)
A1205S-1WR3			±5V/±100mA	86	
A1209S-1WR3			±9V/±56mA	87	
A1212S-1WR3			±12V/±42mA		
A1215S-1WR3			±15V/±34mA		
A1224S-1WR3		±24V/±21mA			
A1503S-1WR3	1W	15V (13.5V-16.5V)	±3.3V/±152mA	76	1500VDC (SIP)
A1505S-1WR3			±5V/±100mA	86	
A1509S-1WR3			±9V/±56mA	87	
A1512S-1WR3			±12V/±42mA		
A1515S-1WR3			±15V/±34mA		
A1524S-1WR3		±24V/±21mA			
A2403S-1WR3	1W	24V (21.6V-26.4V)	±3.3V/±152mA	76	1500VDC (SIP)
A2405S-1WR3			±5V/±100mA	86	
A2409S-1WR3			±9V/±56mA	87	
A2412S-1WR3			±12V/±42mA		
A2415S-1WR3			±15V/±34mA		
A2424S-1WR3		±24V/±21mA			

# DC DC 1W Special Input Power Isolation Series

## F\_S-1WR3 PRODUCT SELECTION

Model	Power	Input voltage (Vo/Io)	Output voltage / current	Efficiency % (Typ)	Isolation voltage
F0303S-1WR3	1W	3.3V (2.97V-3.63V)	3.3V/303mA	78	3000VDC (SIP)
F0305S-1WR3			5V/200mA	79	
F0312S-1WR3			12V/84mA	80	
F0503S-1WR3	1W	5V (4.5V-5.5V)	3.3V/303mA	80	3000VDC (SIP)
F0505S-1WR3			5V/200mA	85	
F0509S-1WR3			9V/111mA		
F0512S-1WR3			12V/84mA	86	
F0515S-1WR3			15V/67mA		
F0524S-1WR3	24V/42mA	87			
F1203S-1WR3	1W	12V (10.8V-13.2V)	3.3V/303mA	81	3000VDC (SIP)
F1205S-1WR3			5V/200mA	86	
F1209S-1WR3			9V/111mA	87	
F1212S-1WR3			12V/84mA	88	
F1215S-1WR3			15V/67mA		
F1224S-1WR3			24V/42mA		
F1503S-1WR3	1W	15V (13.5V-16.5V)	3.3V/303mA	81	3000VDC (SIP)
F1505S-1WR3			5V/200mA	86	
F1509S-1WR3			9V/111mA	87	
F1512S-1WR3			12V/84mA	88	
F1515S-1WR3			15V/67mA		
F1524S-1WR3	24V/42mA				
F2403S-1WR3	1W	24V (21.6V-26.4V)	3.3V/303mA	81	3000VDC (SIP)
F2405S-1WR3			5V/200mA	86	
F2409S-1WR3			9V/111mA	87	
F2412S-1WR3			12V/84mA	88	
F2415S-1WR3			15V/67mA		
F2424S-1WR3			24V/42mA		

## E\_S-1WR3 PRODUCT SELECTION

Model	Power	Input voltage (Vo/Io)	Output voltage / current	Efficiency % (Typ)	Isolation voltage
E0303S-1WR3	1W	3.3V (2.97V-3.63V)	±3.3V/±152mA	78	3000VDC (SIP)
E0305S-1WR3			±5V/±100mA	79	
E0309S-1WR3			±9V/±56mA	81	
E0312S-1WR3			±12V/±42mA	82	
E0315S-1WR3			±15V/±34mA		
E0324S-1WR3			±24V/±21mA	84	
E0503S-1WR3	1W	5V (4.5V-5.5V)	±3.3V/±122mA	81	3000VDC (SIP)
E0505S-1WR3			±5V/±100mA	84	
E0509S-1WR3			±9V/±56mA	85	
E0512S-1WR3			±12V/±42mA		
E0515S-1WR3			±15V/±34mA	86	
E0524S-1WR3	±24V/±21mA				
E1203S-1WR3	1W	12V (10.8V-13.2V)	±3.3V/±152mA	81	3000VDC (SIP)
E1205S-1WR3			±5V/±100mA	82	
E1209S-1WR3			±9V/±56mA	84	
E1212S-1WR3			±12V/±42mA		
E1215S-1WR3			±15V/±34mA	86	
E1224S-1WR3			±24V/±21mA	88	
E1503S-1WR3	1W	15V (13.5V-16.5V)	±3.3V/±122mA	81	3000VDC (SIP)
E1505S-1WR3			±5V/±100mA	82	
E1509S-1WR3			±9V/±56mA	84	
E1512S-1WR3			±12V/±42mA	88	
E1515S-1WR3			±15V/±34mA		
E1524S-1WR3	±24V/±21mA				
E2403S-1WR3	1W	24V (21.6V-26.4V)	±3.3V/±152mA	81	3000VDC (SIP)
E2405S-1WR3			±5V/±100mA	82	
E2409S-1WR3			±9V/±56mA	84	
E2412S-1WR3			±12V/±42mA	88	
E2415S-1WR3			±15V/±34mA		
E2424S-1WR3			±24V/±21mA		

## H\_S-1WR3 PRODUCT SELECTION

Model	Power	Input voltage (Vo/Io)	Output voltage / current	Efficiency % (Typ)	Isolation voltage
H0303S-1WR3	1W	3.3V (2.97V-3.63V)	3.3V/303mA	68	6000VDC (SIP)
H0305S-1WR3			5V/200mA	72	
H0312S-1WR3			12V/84mA	76	
H0503S-1WR3	1W	5V (4.5V-5.5V)	3.3V/303mA	68	6000VDC (SIP)
H0505S-1WR3			5V/200mA	76	
H0509S-1WR3			9V/111mA		
H0512S-1WR3			12V/84mA	76	
H0515S-1WR3			15V/67mA		
H0524S-1WR3	24V/42mA				
H0903S-1WR3	1W	9V (8.1V-9.9V)	3.3V/303mA	68	6000VDC (SIP)
H0905S-1WR3			5V/200mA	76	
H0909S-1WR3			9V/111mA		
H0912S-1WR3			12V/84mA	76	
H0915S-1WR3			15V/67mA		
H0924S-1WR3			24V/42mA		
H1203S-1WR3	1W	12V (10.8V-13.2V)	3.3V/303mA	68	6000VDC (SIP)
H1205S-1WR3			5V/200mA	76	
H1209S-1WR3			9V/111mA		
H1212S-1WR3			12V/84mA	76	
H1215S-1WR3			15V/67mA		
H1224S-1WR3	24V/42mA				
H1503S-1WR3	1W	15V (13.5V-16.5V)	3.3V/303mA	68	6000VDC (SIP)
H1505S-1WR3			5V/200mA	76	
H1509S-1WR3			9V/111mA		
H1512S-1WR3			12V/84mA	76	
H1515S-1WR3			15V/67mA		
H1524S-1WR3	24V/42mA				
H2403S-1WR3	1W	24V (21.6V-26.4V)	3.3V/303mA	68	6000VDC (SIP)
H2405S-1WR3			5V/200mA	76	
H2409S-1WR3			9V/111mA		
H2412S-1WR3			12V/84mA	76	
H2415S-1WR3			15V/67mA		
H2424S-1WR3			24V/42mA		

# DC DC 2W Constant Voltage Input Isolation Non Regulated series

## B\_S-2WR3 PRODUCT SELECTION

Model	Power	Input voltage (Vo/Io)	Output voltage / current	Efficiency % (Typ)	Isolation voltage
B0503S-2WR3	2W	5V (4.5V-5.5V)	3.3V/606mA	80	1500VDC (SIP)
B0505S-2WR3			5V/400mA	85	
B0509S-2WR3			9V/222mA	86	
B0512S-2WR3			12V/166mA	87	
B0515S-2WR3			15V/133mA		
B0524S-2WR3			24V/83mA		
B0903S-2WR3	2W	9V (8.1V-9.9V)	3.3V/606mA	80	1500VDC (SIP)
B0905S-2WR3			5V/400mA	85	
B0909S-2WR3			9V/222mA	86	
B0912S-2WR3			12V/166mA	87	
B0915S-2WR3			15V/133mA		
B0924S-2WR3			24V/83mA		
B1203S-2WR3	2W	12V (10.8V-13.2V)	3.3V/606mA	81	1500VDC (SIP)
B1205S-2WR3			5V/400mA	86	
B1209S-2WR3			9V/222mA	87	
B1212S-2WR3			12V/166mA	88	
B1215S-2WR3			15V/133mA		
B1224S-2WR3			24V/83mA		
B1503S-2WR3	2W	15V (13.5V-16.5V)	3.3V/606mA	81	1500VDC (SIP)
B1505S-2WR3			5V/400mA	86	
B1509S-2WR3			9V/222mA	87	
B1512S-2WR3			12V/166mA	88	
B1515S-2WR3			15V/133mA		
B1524S-2WR3			24V/83mA		
B2403S-2WR3	2W	24V (21.6V-26.4V)	3.3V/606mA	81	1500VDC (SIP)
B2405S-2WR3			5V/400mA	86	
B2409S-2WR3			9V/222mA	87	
B2412S-2WR3			12V/166mA	88	
B2415S-2WR3			15V/133mA	88	
B2424S-2WR3			24V/83mA		

## A\_S-2WR3 PRODUCT SELECTION

Model	Power	Input voltage (Vo/Io)	Output voltage / current	Efficiency % (Typ)	Isolation voltage
A0303S-2WR3	2W	3.3V (2.97V-3.63V)	±3.3V/±303mA	78	1500VDC (SIP)
A0305S-2WR3			±5V/±200mA	79	
A0309S-2WR3			±9V/±112mA	80	
A0312S-2WR3			±12V/±84mA		
A0315S-2WR3			±15V/±68mA		
A0324S-2WR3			±24V/±42mA		
A0503S-2WR3	2W	5V (4.5V-5.5V)	±3.3V/±303mA	80	1500VDC (SIP)
A0505S-2WR3			±5V/±200mA	85	
A0509S-2WR3			±9V/±112mA	86	
A0512S-2WR3			±12V/±84mA	87	
A0515S-2WR3			±15V/±68mA		
A0524S-2WR3			±24V/±42mA		
A0903S-2WR3	2W	9V (8.1V-9.9V)	±3.3V/±303mA	80	1500VDC (SIP)
A0905S-2WR3			±5V/±200mA	85	
A0909S-2WR3			±9V/±112mA	86	
A0912S-2WR3			±12V/±84mA	87	
A0915S-2WR3			±15V/±68mA		
A0924S-2WR3			±24V/±42mA		
A1203S-2WR3	2W	12V (10.8V-13.2V)	±3.3V/±303mA	81	1500VDC (SIP)
A1205S-2WR3			±5V/±200mA	86	
A1209S-2WR3			±9V/±112mA	87	
A1212S-2WR3			±12V/±84mA	88	
A1215S-2WR3			±15V/±68mA		
A1224S-2WR3			±24V/±42mA		
A1503S-2WR3	2W	15V (13.5V-16.5V)	±3.3V/±303mA	81	1500VDC (SIP)
A1505S-2WR3			±5V/±200mA	86	
A1509S-2WR3			±9V/±112mA	87	
A1512S-2WR3			±12V/±84mA	88	
A1515S-2WR3			±15V/±68mA		
A1524S-2WR3			±24V/±42mA		
A2403S-2WR3		24V (21.6V-26.4V)	±3.3V/±303mA	81	1500VDC (SIP)
A2405S-2WR3			±5V/±200mA	86	
A2409S-2WR3			±9V/±112mA	87	
A2412S-2WR3			±12V/±84mA	88	
A2415S-2WR3			±15V/±68mA	87	
A2424S-2WR3			±24V/±42mA		

# DC DC 2W Constant Voltage Input Isolation Non Regulated series

## F\_S-2WR3 PRODUCT SELECTION

Model	Power	Input voltage (Vo/Io)	Output voltage / current	Efficiency % (Typ)	Isolation voltage
F0303S-2WR3	2W	3.3V (2.97V-3.63V)	3.3V/606mA	80	3000VDC (SIP)
F0305S-2WR3			5V/400mA	82	
F0309S-2WR3			9V/224mA		
F0312S-2WR3			12V/167mA		
F0315S-2WR3			15V/133mA		
F0324S-2WR3			24V/83mA		
F0503S-2WR3	2W	5V (4.5V-5.5V)	3.3V/606mA	82	3000VDC (SIP)
F0505S-2WR3			5V/400mA	86	
F0509S-2WR3			9V/224mA	82	
F0512S-2WR3			12V/167mA		
F0515S-2WR3			15V/133mA		
F0524S-2WR3			24V/83mA		
F0903S-2WR3	2W	9V (8.1V-9.9V)	3.3V/606mA		82
F0905S-2WR3			5V/400mA		
F0909S-2WR3			9V/224mA		
F0912S-2WR3			12V/167mA		
F0915S-2WR3			15V/133mA		
F0924S-2WR3			24V/83mA		
F1203S-2WR3	2W	12V (10.8V-13.2V)	3.3V/606mA	80	3000VDC (SIP)
F1205S-2WR3			5V/400mA	82	
F1209S-2WR3			9V/224mA		
F1212S-2WR3			12V/167mA		
F1215S-2WR3			15V/133mA		
F1224S-2WR3			24V/83mA		
F1503S-2WR3	2W	15V (13.5V-16.5V)	3.3V/606mA	82	3000VDC (SIP)
F1505S-2WR3			5V/400mA	86	
F1509S-2WR3			9V/224mA	82	
F1512S-2WR3			12V/167mA		
F1515S-2WR3			15V/133mA		
F1524S-2WR3			24V/83mA		
F2403S-2WR3	2W	24V (21.6V-26.4V)	3.3V/606mA		82
F2405S-2WR3			5V/400mA		
F2409S-2WR3			9V/224mA		
F2412S-2WR3			12V/167mA		
F2415S-2WR3			15V/133mA		
F2424S-2WR3			24V/83mA	83	

## E\_S-2WR3 PRODUCT SELECTION

Model	Power	Input voltage (Vo/Io)	Output voltage / current	Efficiency % (Typ)	Isolation voltage
E0503S-2WR3	2W	5V (4.5V-5.5V)	±3.3V/±303mA	76	3000VDC (SIP)
E0505S-2WR3			±5V/±200mA	86	
E0509S-2WR3			±9V/±112mA	87	
E0512S-2WR3			±12V/±84mA		
E0515S-2WR3			±15V/±67mA		
E0524S-2WR3			±24V/±42mA		
E0903S-2WR3	2W	9V (8.1V-9.9V)	±3.3V/±303mA		76
E0905S-2WR3			±5V/±200mA	86	
E0909S-2WR3			±9V/±112mA	87	
E0912S-2WR3			±12V/±84mA		
E0915S-2WR3			±15V/±67mA		
E0924S-2WR3			±24V/±42mA		
E1203S-2WR3	2W	12V (10.8V-13.2V)	±3.3V/±303mA		76
E1205S-2WR3			±5V/±200mA	86	
E1209S-2WR3			±9V/±112mA	87	
E1212S-2WR3			±12V/±84mA		
E1215S-2WR3			±15V/±67mA		
E1224S-2WR3			±24V/±42mA		
E1503S-2WR3	2W	15V (13.5V-16.5V)	±3.3V/±303mA		76
E1505S-2WR3			±5V/±200mA	86	
E1509S-2WR3			±9V/±112mA	87	
E1512S-2WR3			±12V/±84mA		
E1515S-2WR3			±15V/±67mA		
E1524S-2WR3			±24V/±42mA		
E2403S-2WR3	2W	24V (21.6V-26.4V)	±3.3V/±303mA		76
E2405S-2WR3			±5V/±200mA	86	
E2409S-2WR3			±9V/±112mA	87	
E2412S-2WR3			±12V/±84mA		
E2415S-2WR3			±15V/±67mA		
E2424S-2WR3			±24V/±42mA		

# DC DC 3W Voltage Input Isolated Regulated Output Series

## B\_S-3WR3 PRODUCT SELECTION

Model	Power	Input voltage (Vo/Io)	Output voltage / current	Efficiency % (Typ)	Isolation voltage
B0503S-3WR3	3W	5V (4.5V-5.5V)	3.3V/909mA	78	1500VDC (SIP)
B0505S-3WR3			5V/600mA	82	
B0509S-3WR3			9V/333mA	84	
B0512S-3WR3			12V/250mA		
B0515S-3WR3			15V/200mA		
B0524S-3WR3			24V/150mA		
B0903S-3WR3	3W	9V (8.1V-9.9V)	3.3V/909mA	78	1500VDC (SIP)
B0905S-3WR3			5V/600mA	82	
B0909S-3WR3			9V/333mA	84	
B0912S-3WR3			12V/250mA		
B0915S-3WR3			15V/200mA		
B0924S-3WR3			24V/150mA		
B1203S-3WR3	3W	12V (10.8V-13.2V)	3.3V/909mA	78	1500VDC (SIP)
B1205S-3WR3			5V/600mA	82	
B1209S-3WR3			9V/333mA	84	
B1212S-3WR3			12V/250mA		
B1215S-3WR3			15V/200mA		
B1224S-3WR3			24V/150mA		
B1503S-3WR3	3W	15V (13.5V-16.5V)	3.3V/909mA	78	1500VDC (SIP)
B1505S-3WR3			5V/600mA	82	
B1509S-3WR3			9V/333mA	84	
B1512S-3WR3			12V/250mA		
B1515S-3WR3			15V/200mA		
B1524S-3WR3			24V/150mA		
B2403S-3WR3	3W	24V (21.6V-26.4V)	3.3V/909mA	78	1500VDC (SIP)
B2405S-3WR3			5V/600mA	82	
B2409S-3WR3			9V/333mA	84	
B2412S-3WR3			12V/250mA		
B2415S-3WR3			15V/200mA		
B2424S-3WR3			24V/150mA		

## F\_S-3WR3 PRODUCT SELECTION

Model	Power	Input voltage (Vo/Io)	Output voltage / current	Efficiency % (Typ)	Isolation voltage
F0503S-3WR3	3W	5V (4.5V-5.5V)	3.3V/909mA	78	3000VDC (SIP)
F0505S-3WR3			5V/600mA	82	
F0509S-3WR3			9V/333mA	84	
F0512S-3WR3			12V/250mA		
F0515S-3WR3			15V/200mA		
F0524S-3WR3			24V/150mA		
F1203S-3WR3	3W	12V (10.8V-13.2V)	3.3V/909mA	78	3000VDC (SIP)
F1205S-3WR3			5V/600mA	82	
F1209S-3WR3			9V/333mA	84	
F1212S-3WR3			12V/250mA		
F1215S-3WR3			15V/200mA		
F1224S-3WR3			24V/150mA		
F1503S-3WR3	3W	15V (13.5V-16.5V)	3.3V/909mA	78	3000VDC (SIP)
F1505S-3WR3			5V/600mA	82	
F1509S-3WR3			9V/333mA	84	
F1512S-3WR3			12V/250mA		
F1515S-3WR3			15V/200mA		
F1524S-3WR3			24V/150mA		
F2403S-3WR3	3W	24V (21.6V-26.4V)	3.3V/909mA	78	3000VDC (SIP)
F2405S-3WR3			5V/600mA	82	
F2409S-3WR3			9V/333mA	84	
F2412S-3WR3			12V/250mA		
F2415S-3WR3			15V/200mA		
F2424S-3WR3			24V/150mA		

## WRA\_S-3WR3 PRODUCT SELECTION

Model	Power	Input voltage (Vo/Io)	Output voltage / current	Efficiency % (Typ)	Isolation voltage
WRA0503S-3WR3	3W	5V (4.5V-9V)	$\pm 3.3V/\pm 455mA$	69	1500VDC (SIP)
WRA0505S-3WR3			$\pm 5V/\pm 300mA$	70	
WRA0512S-3WR3			$\pm 12V/\pm 125mA$	72	
WRA0515S-3WR3			$\pm 15V/\pm 100mA$		
WRA0524S-3WR3			$\pm 24V/\pm 62mA$		
WRA1203S-3WR3	3W	12V (9V-18V)	$\pm 3.3V/\pm 455mA$	69	1500VDC (SIP)
WRA1205S-3WR3			$\pm 5V/\pm 300mA$	76	
WRA1212S-3WR3			$\pm 12V/\pm 125mA$	78	
WRA1215S-3WR3			$\pm 15V/\pm 100mA$		
WRA1224S-3WR3			$\pm 24V/\pm 62mA$		
WRA2403S-3WR3	3W	24V (18V-36V)	$\pm 3.3V/\pm 455mA$	69	1500VDC (SIP)
WRA2405S-3WR3			$\pm 5V/\pm 300mA$	76	
WRA2412S-3WR3			$\pm 12V/\pm 125mA$	78	
WRA2415S-3WR3			$\pm 15V/\pm 100mA$		
WRA2424S-3WR3			$\pm 24V/\pm 62mA$		
WRA4803S-3WR3	3W	48V (36V-72V)	$\pm 3.3V/\pm 455mA$	69	1500VDC (SIP)
WRA4805S-3WR3			$\pm 5V/\pm 300mA$	76	
WRA4812S-3WR3			$\pm 12V/\pm 125mA$	78	
WRA4815S-3WR3			$\pm 15V/\pm 100mA$		
WRA4824S-3WR3			$\pm 24V/\pm 62mA$		

## WRB\_S-3WR3 PRODUCT SELECTION

Model	Power	Input voltage (Vo/Io)	Output voltage / current	Efficiency % (Typ)	Isolation voltage
WRB0503S-3WR3	3W	5V (4.5V-9V)	3.3V/909mA	69	1500VDC (SIP)
WRB0505S-3WR3			5V/600mA	70	
WRB0512S-3WR3			12V/250mA	72	
WRB0515S-3WR3			15V/200mA		
WRB0524S-3WR3			24V/125mA		
WRB1203S-3WR3	3W	12V (9V-18V)	3.3V/909mA	69	1500VDC (SIP)
WRB1205S-3WR3			5V/600mA	76	
WRB1212S-3WR3			12V/250mA	78	
WRB1215S-3WR3			15V/200mA		
WRB1224S-3WR3			24V/125mA		
WRB2403S-3WR3	3W	24V (18V-36V)	3.3V/600mA	69	1500VDC (SIP)
WRB2405S-3WR3			5V/600mA	76	
WRB2412S-3WR3			12V/250mA	78	
WRB2415S-3WR3			15V/200mA		
WRB2424S-3WR3			24V/125mA		
WRB4803S-3WR3	3W	48V (36V-72V)	3.3V/909mA	69	1500VDC (SIP)
WRB4805S-3WR3			5V/600mA	76	
WRB4812S-3WR3			12V/250mA	78	
WRB4815S-3WR3			15V/200mA		
WRB4824S-3WR3			24V/125mA		

# DC DC 3W Voltage Input Isolated Regulated Output Series

## URA\_S-3WR3 PRODUCT SELECTION

Model	Power	Input voltage (Vo/Io)	Output voltage / current	Efficiency % (Typ)	Isolation voltage
URA1203S-3WR3	3W	12V (4.5V-18V)	±3.3V/±455mA	72	1500VDC (SIP)
URA1205S-3WR3			±5V/±300mA	76	
URA1209S-3WR3			±9V/±167mA	78	
URA1212S-3WR3			±12V/±125mA		
URA1215S-3WR3			±15V/±100mA		
URA1224S-3WR3			±24V/±62mA		
URA2403S-3WR3	3W	24V (9V-36V)	±3.3V/±455mA	72	1500VDC (SIP)
URA2405S-3WR3			±5V/±300mA	77	
URA2409S-3WR3			±9V/±167mA	78	
URA2412S-3WR3			±12V/±125mA		
URA2415S-3WR3			±15V/±100mA	79	
URA2424S-3WR3			±24V/±62mA		
URA4803S-3WR3	3W	48V (18V-75V)	±3.3V/±455mA	69	1500VDC (SIP)
URA4805S-3WR3			±5V/±300mA	76	
URA4809S-3WR3			±9V/±167mA	78	
URA4812S-3WR3			±12V/±125mA		
URA4815S-3WR3			±15V/±100mA		
URA4824S-3WR3			±24V/±62mA		

## URB\_S-3WR3 PRODUCT SELECTION

Model	Power	Input voltage (Vo/Io)	Output voltage / current	Efficiency % (Typ)	Isolation voltage
URB1203S-3WR3	3W	12V (4.5V-18V)	3.3V/909mA	72	1500VDC (SIP)
URB1205S-3WR3			5V/600mA	76	
URB1209S-3WR3			9V/333mA	78	
URB1212S-3WR3			12V/250mA		
URB1215S-3WR3			15V/200mA		
URB1224S-3WR3			24V/125mA		
URB2403S-3WR3	3W	24V (9V-36V)	3.3V/909mA	73	1500VDC (SIP)
URB2405S-3WR3			5V/600mA	78	
URB2409S-3WR3			9V/333mA	79	
URB2412S-3WR3			12V/250mA		
URB2415S-3WR3			15V/200mA		
URB2424S-3WR3			24V/125mA		
URB4803S-3WR3	3W	48V (18V-75V)	3.3V/909mA	72	1500VDC (SIP)
URB4805S-3WR3			5V/600mA	76	
URB4809S-3WR3			9V/333mA	78	
URB4812S-3WR3			12V/250mA		
URB4815S-3WR3			15V/200mA		
URB4824S-3WR3			24V/125mA		

# DC DC 5W Wide Voltage Input Conventional Isolation Voltage Series

## VRA\_YMD-5WR3 PRODUCT SELECTION

Model	Power	Input voltage (Vo/Io)	Output voltage / current	Efficiency % (Typ)	Isolation voltage
VRA1205YMD-5WR3	5W	12V (9V-18V)	±5V/±500mA	76	1500VDC (DIP)
VRA1212YMD-5WR3			±12V/±208mA	78	
VRA1215YMD-5WR3			±15V/±167mA	79	
VRA1224YMD-5WR3			±24V/±104mA	81	
VRA2405YMD-5WR3	5W	24V (18V-36V)	±5V/±500mA	76	1500VDC (DIP)
VRA2412YMD-5WR3			±12V/±208mA	80	
VRA2415YMD-5WR3			±15V/±167mA		
VRA2424YMD-5WR3			±24V/±104mA	82	
VRA4805YMD-5WR3	5W	48V (36V-72V)	±5V/±500mA	76	1500VDC (DIP)
VRA4812YMD-5WR3			±12V/±208mA	80	
VRA4815YMD-5WR3			±15V/±167mA		
VRA4824YMD-5WR3			±24V/±104mA	82	
VRA1D05YMD-5WR3	5W	110V (72V-144V)	±5V/±500mA	76	1500VDC (DIP)
VRA1D12YMD-5WR3			±12V/±208mA	80	
VRA1D15YMD-5WR3			±15V/±167mA		
VRA1D24YMD-5WR3			±24V/±104mA	82	

## VRB\_YMD-5WR3 PRODUCT SELECTION

Model	Power	Input voltage (Vo/Io)	Output voltage / current	Efficiency % (Typ)	Isolation voltage
VRB1203YMD-5WR3	5W	12V (9V-18V)	3.3V/1200mA	75	1500VDC (DIP)
VRB1205YMD-5WR3			5V/1000mA	76	
VRB1212YMD-5WR3			12V/416mA	78	
VRB1215YMD-5WR3			15V/333mA	79	
VRB1224YMD-5WR3			24V/208mA	81	
VRB2403YMD-5WR3	5W	24V (18V-36V)	3.3V/1200mA	75	1500VDC (DIP)
VRB2405YMD-5WR3			5V/1000mA	76	
VRB2412YMD-5WR3			12V/416mA	80	
VRB2415YMD-5WR3			15V/333mA		
VRB2424YMD-5WR3			24V/208mA	82	
VRB4803YMD-5WR3	5W	48V (36V-72V)	3.3V/1200mA	75	1500VDC (DIP)
VRB4805YMD-5WR3			5V/1000mA	76	
VRB4812YMD-5WR3			12V/416mA	80	
VRB4815YMD-5WR3			15V/333mA		
VRB4824YMD-5WR3			24V/208mA	82	
VRB11003YMD-5WR3	5W	110V (72V-144V)	3.3V/1200mA	75	1500VDC (DIP)
VRB1D05YMD-5WR3			5V/1000mA	76	
VRB1D12YMD-5WR3			12V/416mA	80	
VRB1D15YMD-5WR3			15V/333mA		
VRB1D24YMD-5WR3			24V/208mA	82	

# DC DC 5W Wide Voltage Input Conventional Isolation Voltage Series

## URA\_YMD-5WR3 PRODUCT SELECTION

Model	Power	Input voltage (Vo/Io)	Output voltage / current	Efficiency % (Typ)	Isolation voltage
URA2405YMD-5WR3	5W	24V (9V-36V)	±5V/±500mA	83	1500VDC (DIP)
URA2412YMD-5WR3			±12V/±208mA	86	
URA2415YMD-5WR3			±15V/±167mA	88	
URA2424YMD-5WR3			±24V/±104mA		
URA4805YMD-5WR3	5W	48V (18V-75V)	±5V/±500mA	83	1500VDC (DIP)
URA4812YMD-5WR3			±12V/±208mA	86	
URA4815YMD-5WR3			±15V/±167mA	88	
URA4824YMD-5WR3			±24V/±104mA		
URA1D05YMD-5WR3	5W	110V (40V-160V)	±5V/±500mA	83	1500VDC (DIP)
URA1D12YMD-5WR3			±12V/±208mA	86	
URA1D15YMD-5WR3			±15V/±167mA	88	
URA1D24YMD-5WR3			±24V/±104mA		

## URB\_YMD-5WR3 PRODUCT SELECTION

Model	Power	Input voltage (Vo/Io)	Output voltage / current	Efficiency % (Typ)	Isolation voltage
URB2403YMD-5WR3	5W	24V (9V-36V)	3.3V/1200mA	80	1500VDC (DIP)
URB2405YMD-5WR3			5V/1000mA	83	
URB2412YMD-5WR3			12V/416mA	87	
URB2415YMD-5WR3			15V/333mA	88	
URB2424YMD-5WR3			24V/208mA		
URB4803YMD-5WR3	5W	48V (18V-75V)	3.3V/1200mA	80	1500VDC (DIP)
URB4805YMD-5WR3			5V/1000mA	83	
URB4812YMD-5WR3			12V/416mA	87	
URB4815YMD-5WR3			15V/333mA	88	
URB4824YMD-5WR3			24V/208mA		
URB1D03YMD-5WR3	5W	110V (40V-160V)	3.3V/1200mA	80	1500VDC (DIP)
URB1D05YMD-5WR3			5V/1000mA	83	
URB1D12YMD-5WR3			12V/416mA	87	
URB1D15YMD-5WR3			15V/333mA	88	
URB1D24YMD-5WR3			24V/208mA		

# DC DC 6W Wide Voltage Input Conventional Isolation Voltage Series

## VRA\_YMD-6WR3 PRODUCT SELECTION

Model	Power	Input voltage (Vo/Io)	Output voltage / current	Efficiency % (Typ)	Isolation voltage
VRA1205YMD-6WR3	6W	12V (9V-18V)	±5V/±600mA	76	1500VDC (DIP)
VRA1212YMD-6WR3			±12V/±250mA	78	
VRA1215YMD-6WR3			±15V/±200mA	79	
VRA1224YMD-6WR3			±24V/±125mA	81	
VRA2405YMD-6WR3	6W	24V (18V-36V)	±5V/±600mA	76	1500VDC (DIP)
VRA2412YMD-6WR3			±12V/±250mA	80	
VRA2415YMD-6WR3			±15V/±200mA		
VRA2424YMD-6WR3			±24V/±125mA	82	
VRA4805YMD-6WR3	6W	48V (36V-72V)	±5V/±600mA	76	1500VDC (DIP)
VRA4812YMD-6WR3			±12V/±250mA	80	
VRA4815YMD-6WR3			±15V/±200mA		
VRA4824YMD-6WR3			±24V/±125mA	82	
VRA1D05YMD-6WR3	6W	110V (72V-144V)	±5V/±600mA	76	1500VDC (DIP)
VRA1D12YMD-6WR3			±12V/±250mA	80	
VRA1D15YMD-6WR3			±15V/±200mA		
VRA1D24YMD-6WR3			±24V/±125mA	82	

## VRB\_YMD-6WR3 PRODUCT SELECTION

Model	Power	Input voltage (Vo/Io)	Output voltage / current	Efficiency % (Typ)	Isolation voltage
VRB1203YMD-6WR3	6W	12V (9V-18V)	3.3V/1200mA	75	1500VDC (DIP)
VRB1205YMD-6WR3			5V/1200mA	76	
VRB1212YMD-6WR3			12V/500mA	78	
VRB1215YMD-6WR3			15V/400mA	79	
VRB1224YMD-6WR3			24V/250mA	81	
VRB2403YMD-6WR3	6W	24V (18V-36V)	3.3V/1200mA	75	1500VDC (DIP)
VRB2405YMD-6WR3			5V/1200mA	76	
VRB2412YMD-6WR3			12V/500mA	80	
VRB2415YMD-6WR3			15V/400mA		
VRB2424YMD-6WR3			24V/250mA	82	
VRB4803YMD-6WR3	6W	48V (36V-72V)	3.3V/1200mA	75	1500VDC (DIP)
VRB4805YMD-6WR3			5V/1200mA	76	
VRB4812YMD-6WR3			12V/500mA	80	
VRB4815YMD-6WR3			15V/400mA		
VRB4824YMD-6WR3			24V/250mA	82	
VRB1D03YMD-6WR3	6W	110V (72V-144V)	3.3V/1200mA	75	1500VDC (DIP)
VRB1D05YMD-6WR3			5V/1200mA	76	
VRB1D12YMD-6WR3			12V/500mA	80	
VRB1D15YMD-6WR3			15V/400mA		
VRB1D24YMD-6WR3			24V/250mA	82	



# DC DC 6W Wide Voltage Input Conventional Isolation Voltage Series

## URA\_YMD-6WR3 PRODUCT SELECTION

Model	Power	Input voltage (Vo/Io)	Output voltage / current	Efficiency % (Typ)	Isolation voltage
URA2403YMD-6WR3	6W	24V (9V-36V)	±3.3V/±909mA	80	1500VDC (DIP)
URA2405YMD-6WR3			±5V/±600mA	83	
URA2409YMD-6WR3			±9V/±333mA	86	
URA2412YMD-6WR3			±12V/±250mA	88	
URA2415YMD-6WR3			±15V/±200mA	88	
URA2424YMD-6WR3			±24V/±125mA	89	
URA4803YMD-6WR3	6W	48V (18V-75V)	±3.3V/±909mA	80	1500VDC (DIP)
URA4805YMD-6WR3			±5V/±600mA	83	
URA4809YMD-6WR3			±9V/±333mA	86	
URA4812YMD-6WR3			±12V/±250mA	88	
URA4815YMD-6WR3			±15V/±200mA	88	
URA4824YMD-6WR3			±24V/±125mA	89	
URA1D03YMD-6WR3	6W	110V (40V-160V)	±3.3V/±909mA	80	1500VDC (DIP)
URA1D05YMD-6WR3			±5V/±600mA	83	
URA1D09YMD-6WR3			±9V/±333mA	86	
URA1D12YMD-6WR3			±12V/±250mA	88	
URA1D15YMD-6WR3			±15V/±200mA	88	
URA1D24YMD-6WR3			±24V/±125mA	89	

## URB\_YMD-6WR3 PRODUCT SELECTION

Model	Power	Input voltage (Vo/Io)	Output voltage / current	Efficiency % (Typ)	Isolation voltage
URB2403YMD-6WR3	6W	24V (9V-36V)	3.3V/1400mA	80	1500VDC (DIP)
URB2405YMD-6WR3			5V/1200mA	83	
URB2409YMD-6WR3			9V/667mA	87	
URB2412YMD-6WR3			12V/500mA	88	
URB2415YMD-6WR3			15V/400mA	88	
URB2424YMD-6WR3			24V/250mA	89	
URB4803YMD-6WR3	6W	48V (18V-75V)	3.3V/1400mA	80	1500VDC (DIP)
URB4805YMD-6WR3			5V/1200mA	83	
URB4809YMD-6WR3			9V/667mA	87	
URB4812YMD-6WR3			12V/500mA	88	
URB4815YMD-6WR3			15V/400mA	88	
URB4824YMD-6WR3			24V/250mA	89	
URB1D03YMD-6WR3	6W	110V (40V-160V)	3.3V/1400mA	80	1500VDC (DIP)
URB1D05YMD-6WR3			5V/1200mA	83	
URB1D09YMD-6WR3			9V/667mA	87	
URB1D12YMD-6WR3			12V/500mA	88	
URB1D15YMD-6WR3			15V/400mA	88	
URB1D24YMD-6WR3			24V/250mA	89	

# DC DC 10W Wide Voltage Input Conventional Isolation Voltage Series

## VRA\_YMD-10WR3 PRODUCT SELECTION

Model	Power	Input voltage (Vo/Io)	Output voltage / current	Efficiency % (Typ)	Isolation voltage
VRA1205YMD-10WR3	10W	12V (9V-18V)	±5V/±1000mA	83	1500VDC (DIP)
VRA1212YMD-10WR3			±12V/±416mA	86	
VRA1215YMD-10WR3			±15V/±333mA	88	
VRA1224YMD-10WR3			±24V/±208mA	89	
VRA2405YMD-10WR3	10W	24V (18V-36V)	±5V/±1000mA	83	1500VDC (DIP)
VRA2412YMD-10WR3			±12V/±416mA	86	
VRA2415YMD-10WR3			±15V/±333mA	88	
VRA2424YMD-10WR3			±24V/±208mA	89	
VRA4805YMD-10WR3	10W	48V (36V-72V)	±5V/±1000mA	83	1500VDC (DIP)
VRA4812YMD-10WR3			±12V/±416mA	86	
VRA4815YMD-10WR3			±15V/±333mA	88	
VRA4824YMD-10WR3			±24V/±208mA	89	
VRA1D05YMD-10WR3	10W	110V (72V-144V)	±5V/±1000mA	83	1500VDC (DIP)
VRA1D12YMD-10WR3			±12V/±416mA	86	
VRA1D15YMD-10WR3			±15V/±333mA	88	
VRA1D24YMD-10WR3			±24V/±208mA	89	

## VRB\_YMD-10WR3 PRODUCT SELECTION

Model	Power	Input voltage (Vo/Io)	Output voltage / current	Efficiency % (Typ)	Isolation voltage
VRB1203YMD-10WR3	10W	12V (9V-18V)	3.3V/2400mA	80	1500VDC (DIP)
VRB1205YMD-10WR3			5V/2000mA	83	
VRB1212YMD-10WR3			12V/833mA	87	
VRB1215YMD-10WR3			15V/666mA	88	
VRB1224YMD-10WR3			24V/419mA	89	
VRB2403YMD-10WR3	10W	24V (18V-36V)	3.3V/2400mA	80	1500VDC (DIP)
VRB2405YMD-10WR3			5V/2000mA	83	
VRB2412YMD-10WR3			12V/833mA	87	
VRB2415YMD-10WR3			15V/666mA	88	
VRB2424YMD-10WR3	24V/419mA	89			
VRB4803YMD-10WR3	10W	48V (36V-72V)	3.3V/2400mA	80	1500VDC (DIP)
VRB4805YMD-10WR3			5V/2000mA	83	
VRB4812YMD-10WR3			12V/833mA	87	
VRB4815YMD-10WR3			15V/666mA	88	
VRB4824YMD-10WR3	24V/419mA	89			
VRB1D03YMD-10WR3	10W	110V (72V-144V)	3.3V/2400mA	80	1500VDC (DIP)
VRB1D05YMD-10WR3			5V/2000mA	83	
VRB1D12YMD-10WR3			12V/833mA	87	
VRB1D15YMD-10WR3			15V/666mA	88	
VRB1D24YMD-10WR3			24V/419mA	89	

# DC DC 10W Wide Voltage Input Conventional Isolation Voltage Series

## URA\_YMD-10WR3 PRODUCT SELECTION

Model	Power	Input voltage (Vo/Io)	Output voltage / current	Efficiency % (Typ)	Isolation voltage
URA2403YMD-10WR3	10W	24V (9V-36V)	±3.3V/±1500mA	80	1500VDC (DIP)
URA2405YMD-10WR3			±5V/±1000mA	83	
URA2409YMD-10WR3			±9V/±555mA	86	
URA2412YMD-10WR3			±12V/±416mA	88	
URA2415YMD-10WR3			±15V/±333mA	88	
URA2424YMD-10WR3			±24V/±208mA	89	
URA4803YMD-10WR3	10W	48V (18V-75V)	±3.3V/±1500mA	80	1500VDC (DIP)
URA4805YMD-10WR3			±5V/±1000mA	83	
URA4809YMD-10WR3			±9V/±333mA	86	
URA4812YMD-10WR3			±12V/±416mA	88	
URA4815YMD-10WR3			±15V/±333mA	88	
URA4824YMD-10WR3			±24V/±208mA	89	
URA1D03YMD-10WR3	10W	110V (40V-160V)	±3.3V/±1500mA	80	1500VDC (DIP)
URA1D05YMD-10WR3			±5V/±1000mA	83	
URA1D09YMD-10WR3			±9V/±555mA	86	
URA1D12YMD-10WR3			±12V/±416mA	88	
URA1D15YMD-10WR3			±15V/±333mA	88	
URA1D24YMD-10WR3			±24V/±208mA	89	

## URB\_YMD-10WR3 PRODUCT SELECTION

Model	Power	Input voltage (Vo/Io)	Output voltage / current	Efficiency % (Typ)	Isolation voltage
URB2403YMD-10WR3	10W	24V (9V-36V)	3.3V/2400mA	80	1500VDC (DIP)
URB2405YMD-10WR3			5V/2000mA	83	
URB2409YMD-10WR3			9V/1111mA	87	
URB2412YMD-10WR3			12V/833mA	88	
URB2415YMD-10WR3			15V/400mA	88	
URB2424YMD-10WR3			24V/250mA	89	
URB4803YMD-10WR3	10W	48V (18V-75V)	3.3V/2400mA	80	1500VDC (DIP)
URB4805YMD-10WR3			5V/1200mA	83	
URB4809YMD-10WR3			9V/667mA	87	
URB4812YMD-10WR3			12V/500mA	88	
URB4815YMD-10WR3			15V/400mA	88	
URB4824YMD-10WR3			24V/250mA	89	
URB1D03YMD-10WR3	10W	110V (40V-160V)	3.3V/2400mA	80	1500VDC (DIP)
URB1D05YMD-10WR3			5V/1200mA	83	
URB1D09YMD-10WR3			9V/667mA	87	
URB1D12YMD-10WR3			12V/500mA	88	
URB1D15YMD-10WR3			15V/400mA	88	
URB1D24YMD-10WR3			24V/250mA	89	

## VRA\_LD-10WR3 PRODUCT SELECTION

Model	Power	Input voltage (Vo/Io)	Output voltage / current	Efficiency % (Typ)	Isolation voltage
VRA0505LD-10WR3	10W	5V (4.5V-9V)	±5V/±1000mA	76	1500VDC (DIP)
VRA0512LD-10WR3			±12V/±416mA	81	
VRA0515LD-10WR3			±15V/±333mA	82	
VRA0524LD-10WR3			±24V/±208mA	81	
VRA1205LD-10WR3	10W	12V (9V-18V)	±5V/±1000mA	76	1500VDC (DIP)
VRA1212LD-10WR3			±12V/±416mA	80	
VRA1215LD-10WR3			±15V/±333mA	81	
VRA1224LD-10WR3			±24V/±208mA	82	
VRA2405LD-10WR3	10W	24V (18V-36V)	±5V/±1000mA	76	1500VDC (DIP)
VRA2412LD-10WR3			±12V/±416mA	81	
VRA2415LD-10WR3			±15V/±333mA	83	
VRA2424LD-10WR3			±24V/±208mA	84	
VRA4805LD-10WR3	10W	48V (36V-75V)	±5V/±1000mA	76	1500VDC (DIP)
VRA4812LD-10WR3			±12V/±416mA	81	
VRA4815LD-10WR3			±15V/±333mA	83	
VRA4824LD-10WR3			±24V/±208mA	84	
VRA1D05LD-10WR3	10W	110V (72V-144V)	±5V/±1000mA	76	1500VDC (DIP)
VRA1D12LD-10WR3			±12V/±416mA	81	
VRA1D15LD-10WR3			±15V/±333mA	83	
VRA1D24LD-10WR3			±24V/±208mA	84	

## VRB\_LD-10WR3 PRODUCT SELECTION

Model	Power	Input voltage (Vo/Io)	Output voltage / current	Efficiency % (Typ)	Isolation voltage
VRB0505LD-10WR3	10W	5V (4.5V-9V)	5V/2000mA	83	1500VDC (DIP)
VRB0512LD-10WR3			12V/833mA	81	
VRB0515LD-10WR3			15V/666mA	82	
VRB0524LD-10WR3			24V/416mA	81	
VRB1203LD-10WR3	10W	12V (9V-18V)	3.3V/2000mA	75	1500VDC (DIP)
VRB1205LD-10WR3			5V/2000mA	76	
VRB1212LD-10WR3			12V/833mA	80	
VRB1215LD-10WR3			15V/666mA	81	
VRB1224LD-10WR3	24V/416mA	82			
VRB2403LD-10WR3	10W	24V (18V-36V)	3.3V/2000mA	75	1500VDC (DIP)
VRB2405LD-10WR3			5V/2000mA	76	
VRB2412LD-10WR3			12V/833mA	81	
VRB2415LD-10WR3			15V/666mA	83	
VRB2424LD-10WR3	24V/416mA	84			
VRB4803LD-10WR3	10W	48V (36V-75V)	3.3V/2000mA	75	1500VDC (DIP)
VRB4805LD-10WR3			5V/2000mA	76	
VRB4812LD-10WR3			12V/833mA	81	
VRB4815LD-10WR3			15V/666mA	83	
VRB4824LD-10WR3	24V/416mA	84			
VRB1D03LD-10WR3	10W	110V (72V-144V)	3.3V/2000mA	75	1500VDC (DIP)
VRB1D05LD-10WR3			5V/2000mA	76	
VRB1D12LD-10WR3			12V/833mA	81	
VRB1D15LD-10WR3			15V/666mA	83	
VRB1D24LD-10WR3	24V/416mA	84			

## DC DC 10W Wide Voltage Input Conventional Isolation Voltage Series

### URA\_LD-10WR3 PRODUCT SELECTION

Model	Power	Input voltage (Vo/Io)	Output voltage / current	Efficiency % (Typ)	Isolation voltage
URA2405LD-10WR3	10W	24V (9V-36V)	±5V/±1000mA	83	1500VDC (DIP)
URA2412LD-10WR3			±12V/±416mA	86	
URA2415LD-10WR3			±15V/±333mA	88	
URA2424LD-10WR3			±24V/±208mA	89	
URA4805LD-10WR3	10W	48V (18V-75V)	±5V/±1000mA	83	1500VDC (DIP)
URA4812LD-10WR3			±12V/±416mA	86	
URA4815LD-10WR3			±15V/±333mA	88	
URA4824LD-10WR3			±24V/±208mA	89	
URA1D05LD-10WR3	10W	110V (40V-160V)	±5V/±1000mA	83	1500VDC (DIP)
URA1D12LD-10WR3			±12V/±416mA	86	
URA1D15LD-10WR3			±15V/±333mA	88	
URA1D24LD-10WR3			±24V/±208mA	89	

### URB\_LD-10WR3 PRODUCT SELECTION

Model	Power	Input voltage (Vo/Io)	Output voltage / current	Efficiency % (Typ)	Isolation voltage
URB2403LD-10WR3	10W	24V (9V-36V)	3.3V/2000mA	80	1500VDC (DIP)
URB2405LD-10WR3			5V/2000mA	83	
URB2412LD-10WR3			12V/833mA	87	
URB2415LD-10WR3			15V/666mA	88	
URB2424LD-10WR3			24V/416mA	89	
URB4803LD-10WR3	10W	48V (18V-75V)	3.3V/2000mA	80	1500VDC (DIP)
URB4805LD-10WR3			5V/2000mA	83	
URB4812LD-10WR3			12V/833mA	87	
URB4815LD-10WR3			15V/666mA	88	
URB4824LD-10WR3			24V/416mA	89	
URB1D03LD-10WR3	10W	110V (40V-160V)	3.3V/2000mA	80	1500VDC (DIP)
URB1D05LD-10WR3			5V/2000mA	83	
URB1D12LD-10WR3			12V/833mA	87	
URB1D15LD-10WR3			15V/666mA	88	
URB1D24LD-10WR3			24V/416mA	89	

## DC DC 12W Wide Voltage Input Conventional Isolation Voltage Series

### URA\_YMD-12WR3 PRODUCT SELECTION

Model	Power	Input voltage (Vo/Io)	Output voltage / current	Efficiency % (Typ)	Isolation voltage
URA2405YMD-12WR3	12W	24V (9V-36V)	±5V/±1200mA	83	1500VDC (DIP)
URA2412YMD-12WR3			±12V/±500mA	86	
URA2415YMD-12WR3			±15V/±400mA	88	
URA2424YMD-12WR3			±24V/±250mA	89	
URA4805YMD-12WR3	12W	48V (18V-75V)	±5V/±1200mA	83	1500VDC (DIP)
URA4812YMD-12WR3			±12V/±500mA	86	
URA4815YMD-12WR3			±15V/±400mA	88	
URA4824YMD-12WR3			±24V/±250mA	89	
URA1D05YMD-12WR3	12W	110V (40V-160V)	±5V/±1200mA	83	1500VDC (DIP)
URA1D12YMD-12WR3			±12V/±500mA	86	
URA1D15YMD-12WR3			±15V/±400mA	88	
URA1D24YMD-12WR3			±24V/±250mA	89	

### URB\_YMD-12WR3 PRODUCT SELECTION

Model	Power	Input voltage (Vo/Io)	Output voltage / current	Efficiency % (Typ)	Isolation voltage
URB2403YMD-12WR3	12W	24V (9V-36V)	3.3V/3000mA	80	1500VDC (DIP)
URB2405YMD-12WR3			5V/2400mA	83	
URB2412YMD-12WR3			12V/1000mA	87	
URB2415YMD-12WR3			15V/800mA	88	
URB2424YMD-12WR3			24V/500mA	89	
URB4803YMD-12WR3	12W	48V (18V-75V)	3.3V/3000mA	80	1500VDC (DIP)
URB4805YMD-12WR3			5V/2400mA	83	
URB4812YMD-12WR3			12V/1000mA	87	
URB4815YMD-12WR3			15V/800mA	88	
URB4824YMD-12WR3			24V/500mA	89	
URB1D03YMD-12WR3	12W	110V (40V-160V)	3.3V/3000mA	80	1500VDC (DIP)
URB1D05YMD-12WR3			5V/2400mA	83	
URB1D12YMD-12WR3			12V/1000mA	87	
URB1D15YMD-12WR3			15V/800mA	88	
URB1D24YMD-12WR3			24V/500mA	89	

# DC DC 15W Wide Voltage Input Conventional Isolation Voltage Series

## URA\_YMD-15WR3 PRODUCT SELECTION

Model	Power	Input voltage (Vo/Io)	Output voltage / current	Efficiency % (Typ)	Isolation voltage
URA2403YMD-15WR3	15W	24V (9V-36V)	±3.3V/±2270mA	85	1500VDC (DIP)
URA2405YMD-15WR3			±5V/±1500mA		
URA2409YMD-15WR3			±9V/±833mA	86	
URA2412YMD-15WR3			±12V/±625mA		
URA2415YMD-15WR3			±15V/±500mA	88	
URA2424YMD-15WR3			±24V/±313mA		
URA4803YMD-15WR3			15W	48V (18V-75V)	
URA4805YMD-15WR3	±5V/±1500mA				
URA4809YMD-15WR3	±9V/±833mA	86			
URA4812YMD-15WR3	±12V/±625mA				
URA4815YMD-15WR3	±15V/±500mA	88			
URA4824YMD-15WR3	±24V/±313mA				

## URB\_YMD-15WR3 PRODUCT SELECTION

Model	Power	Input voltage (Vo/Io)	Output voltage / current	Efficiency % (Typ)	Isolation voltage
URB2403YMD-15WR3	15W	24V (9V-36V)	3.3V/4000mA	86	1500VDC (DIP)
URB2405YMD-15WR3			5V/3000mA		
URB2409YMD-15WR3			9V/1700mA	88	
URB2412YMD-15WR3			12V/1250mA		
URB2415YMD-15WR3			15V/1000mA	89	
URB2424YMD-15WR3			24V/625mA		
URB4803YMD-15WR3			15W	48V (18V-75V)	
URB4805YMD-15WR3	5V/3000mA				
URB2409YMD-15WR3	9V/1700mA	88			
URB4812YMD-15WR3	12V/1250mA				
URB4815YMD-15WR3	15V/1000mA	89			
URB4824YMD-15WR3	24V/625mA				

# DC DC 20W Wide Voltage Input Conventional Isolation Voltage Series

## URA\_YMD-20WR3 PRODUCT SELECTION

Model	Power	Input voltage (Vo/Io)	Output voltage / current	Efficiency % (Typ)	Isolation voltage
URA2403YMD-20WR3	20W	24V (9V-36V)	±3.3V/±3000mA	85	1500VDC (DIP)
URA2405YMD-20WR3			±5V/±2000mA		
URA2409YMD-20WR3			±9V/±1100mA	88	
URA2412YMD-20WR3			±12V/±833mA		
URA2415YMD-20WR3			±15V/±667mA	88	
URA2424YMD-20WR3			±24V/±416mA		
URA4803YMD-20WR3			20W	48V (18V-75V)	
URA4805YMD-20WR3	±5V/±2000mA				
URA4809YMD-20WR3	±9V/±1100mA	88			
URA4812YMD-20WR3	±12V/±833mA				
URA4815YMD-20WR3	±15V/±667mA	88			
URA4824YMD-20WR3	±24V/±416mA				

## URB\_YMD-20WR3 PRODUCT SELECTION

Model	Power	Input voltage (Vo/Io)	Output voltage / current	Efficiency % (Typ)	Isolation voltage
URB2403YMD-20WR3	20W	24V (9V-36V)	3.3V/5000mA	86	1500VDC (DIP)
URB2405YMD-20WR3			5V/4000mA		
URB2409YMD-20WR3			9V/2200mA	88	
URB2412YMD-20WR3			12V/1666mA		
URB2415YMD-20WR3			15V/1333mA	89	
URB2424YMD-20WR3			24V/833mA		
URB4803YMD-20WR3			20W	48V (18V-75V)	
URB4805YMD-20WR3	5V/4000mA				
URB2409YMD-20WR3	9V/2200mA	88			
URB4812YMD-20WR3	12V/1666mA				
URB4815YMD-20WR3	15V/1333mA	89			
URB4824YMD-20WR3	24V/833mA				

## DC DC 30W Wide Voltage Input Conventional Isolation Voltage Series

### URA\_LMD-30WR3 PRODUCT SELECTION

Model	Power	Input voltage (Vo/Io)	Output voltage / current	Efficiency % (Typ)	Isolation voltage
URA2405LMD-30WR3	30W	24V (9V-36V)	±5V/±3000mA	85	1500VDC (DIP)
URA2412LMD-30WR3			±12V/±1250mA	88	
URA2415LMD-30WR3			±15V/±1000mA		
URA2424LMD-30WR3			±24V/±625mA		
URA4805LMD-30WR3	30W	48V (18V-75V)	±5V/±3000mA	84	1500VDC (DIP)
URA4812LMD-30WR3			±12V/±1250mA	88	
URA4815LMD-30WR3			±15V/±1000mA		
URA4824LMD-30WR3			±24V/±625mA		
URA1D05LMD-30WR3	30W	110V (40V-160V)	±5V/±3000mA	84	1500VDC (DIP)
URA1D12LMD-30WR3			±12V/±1250mA	88	
URA1D15LMD-30WR3			±15V/±1000mA		
URA1D24LMD-30WR3			±24V/±625mA		

### URB\_LMD-30WR3 PRODUCT SELECTION

Model	Power	Input voltage (Vo/Io)	Output voltage / current	Efficiency % (Typ)	Isolation voltage
URB2403LMD-30WR3	30W	24V (9V-36V)	3.3V/8000mA	80	1500VDC (DIP)
URB2405LMD-30WR3			5V/6000mA	85	
URB2412LMD-30WR3			12V/2500mA	88	
URB2415LMD-30WR3			15V/2000mA	89	
URB2424LMD-30WR3			24V/1250mA		
URB4803LMD-30WR3	30W	48V (18V-75V)	3.3V/8000mA	80	1500VDC (DIP)
URB4805LMD-30WR3			5V/6000mA	85	
URB4812LMD-30WR3			12V/2500mA	87	
URB4815LMD-30WR3			15V/2000mA	88	
URB4824LMD-30WR3			24V/1250mA	89	
URB1D03LMD-30WR3	30W	110V (40V-160V)	3.3V/8000mA	85	1500VDC (DIP)
URB1D05LMD-30WR3			5V/6000mA	86	
URB1D12LMD-30WR3			12V/2500mA	88	
URB1D15LMD-30WR3			15V/2000mA	89	
URB1D24LMD-30WR3			24V/1250mA		

## DC DC 40W Wide Voltage Input Conventional Isolation Voltage Series

### URA\_LMD-40WR3 PRODUCT SELECTION

Model	Power	Input voltage (Vo/Io)	Output voltage / current	Efficiency % (Typ)	Isolation voltage
URA2412LMD-40WR3	40W	24V (9V-36V)	±12V/±1666mA	88	1500VDC (DIP)
URA2415LMD-40WR3			±15V/±1333mA		
URA2424LMD-40WR3			±24V/±833mA	87	
URA4809LMD-40WR3	40W	48V (18V-75V)	±9V/±2222mA	88	1500VDC (DIP)
URA4812LMD-40WR3			±12V/±1250mA		
URA4815LMD-40WR3			±15V/±1000mA		
URA4824LMD-30WR3			±24V/±625mA		
URA1D09LMD-40WR3	40W	110V (40V-160V)	±9V/±2222mA	88	1500VDC (DIP)
URA1D12LMD-40WR3			±12V/±1666mA		
URA1D15LMD-40WR3			±15V/±1333mA	89	
URA1D24LMD-40WR3			±24V/±833mA		

### URB\_LMD-40WR3 PRODUCT SELECTION

Model	Power	Input voltage (Vo/Io)	Output voltage / current	Efficiency % (Typ)	Isolation voltage
URB2405LMD-40WR3	40W	24V (9V-36V)	5V/8000mA	86	1500VDC (DIP)
URB2412LMD-40WR3			12V/3333mA	88	
URB2415LMD-40WR3			15V/2666mA	89	
URB2424LMD-40WR3			24V/1666mA		
URB4805LMD-40WR3	40W	48V (18V-75V)	5V/8000mA	86	1500VDC (DIP)
URB4809LMD-40WR3			9V/4444mA	87	
URB4812LMD-40WR3			12V/3333mA		
URB4815LMD-40WR3			15V/2666mA	88	
URB4824LMD-40WR3			24V/1666mA	89	
URB1D05LMD-40WR3	40W	110V (40V-160V)	5V/8000mA	86	1500VDC (DIP)
URB1D09LMD-40WR3			9V/4444mA	88	
URB1D12LMD-40WR3			12V/3333mA		
URB1D15LMD-40WR3			15V/2666mA	89	
URB1D24LMD-40WR3			24V/1666mA		

## DC DC 50W Wide Voltage Input Conventional Isolation Voltage Series

### URA\_LMD-50WR3 PRODUCT SELECTION

Model	Power	Input voltage (Vo/Io)	Output voltage / current	Efficiency % (Typ)	Isolation voltage
URA2412LMD-50WR3	50W	24V (9V-36V)	±12V/±1666mA	88	1500VDC (DIP)
URA2415LMD-50WR3			±15V/±1333mA		
URA2424LMD-50WR3			±24V/±833mA	87	
URA4809LMD-50WR3	50W	48V (18V-75V)	±9V/±2222mA	88	1500VDC (DIP)
URA4812LMD-50WR3			±12V/±1250mA		
URA4815LMD-50WR3			±15V/±1000mA	87	
URA4824LMD-50WR3			±24V/±625mA	87	
URA1D09LMD-50WR3	50W	110V (40V-160V)	±9V/±2222mA	88	1500VDC (DIP)
URA1D12LMD-50WR3			±12V/±1666mA		
URA1D15LMD-50WR3			±15V/±1333mA	89	
URA1D24LMD-50WR3			±24V/±833mA		

### URB\_LMD-50WR3 PRODUCT SELECTION

Model	Power	Input voltage (Vo/Io)	Output voltage / current	Efficiency % (Typ)	Isolation voltage
URB2405LMD-50WR3	50W	24V (9V-36V)	5V/8000mA	86	1500VDC (DIP)
URB2412LMD-50WR3			12V/3333mA	88	
URB2415LMD-50WR3			15V/2666mA	89	
URB2424LMD-50WR3			24V/1666mA		
URB4805LMD-50WR3	50W	48V (18V-75V)	5V/8000mA	86	1500VDC (DIP)
URB4809LMD-50WR3			9V/4444mA	87	
URB4812LMD-50WR3			12V/3333mA		
URB4815LMD-50WR3			15V/2666mA	88	
URB4824LMD-50WR3			24V/1666mA	89	
URB1D05LMD-50WR3	50W	110V (40V-160V)	5V/8000mA	86	1500VDC (DIP)
URB1D09LMD-50WR3			9V/4444mA	88	
URB1D12LMD-50WR3			12V/3333mA		
URB1D15LMD-50WR3			15V/2666mA	89	
URB1D24LMD-50WR3			24V/1666mA		

## DC DC K78 Wide Voltage Input Conventional Isolation Voltage Series

### K78-500R3 PRODUCT SELECTION

Model	Input voltage (VDC)	Output voltage / current	Efficiency % (Typ) Min/Max (Vin)
K7803-500R3	24V(4.75V-36V)	3.3V/500mA	86/80
K7805-500R3	24V(6.5V-36V)	5V/500mA	90/84
	12V(7V-31V)	-5V/-300mA	80/81
K7809-500R3	24V(12V-36V)	9V/500mA	93/90
K7812-500R3	24V(15V-36V)	12V/500mA	94/91
	12V(8V-24V)	-12V/-150mA	84/85
K7815-500R3	24V(19V-36V)	15V/500mA	95/93
	12V(8V-21V)	-15V/-150mA	85/87

For More Inquires Connect With



**RAJGURU ELECTRONICS (I) PVT. LTD.**

[An ISO 9001:2015 Certified Company]

📍 399/3F, 3rd Floor, Manek Chambers, Above Vasant Bhuvan Hotel, Dr. D.B. Marg, Lamington Road, Mumbai - 400004, Maharashtra, India

☎ 022-40168411/40138411

📞 917400168411

✉ enquiry@rajguruelectronics.com

🌐 www.rajguruelectronics.com | www.adiy.in